



## Safety on Outings Policy

### Rationale

Outings offer children valuable fresh air and exercise as well as enabling them to experience what the community has to offer. I am committed to providing a variety of outings for minded children and aim to always keep them safe whilst on outings.

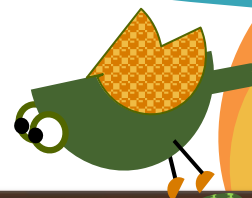
### Procedure

I will obtain written parental permission to include children in outings. On outings, we may be walking, travelling by my personal car which has full insurance cover. Children are always transported safely and appropriate buggies, car seats and walking reins are used where appropriate. I aim to keep all children within sight or always hearing to prevent them becoming lost. In the unlikely event of a child becoming lost, I will follow my lost child policy.

I hold appropriate car insurance and the car is kept in roadworthy condition, with full MOT if appropriate, breakdown cover and with tyre pressure regularly checked. If your child is transported by any other driver in their own vehicle or my own, I will check all the above and that they have age-appropriate car safety seats.

I always carry a mobile phone that is charged and has credit on it and parent/carer's contact numbers in the phone book. I also carry with me the contact details of my emergency back-up who will be able to collect your child or assist anyone trying to contact you should anything have happened to me. All essential equipment is taken on outings including, first aid kit, sun cream, spare clothing, nappies etc.

Visual risk assessments are carried out for and during each outing. Children who are not in buggies are encouraged to walk close to me to avoid danger from moving traffic. When visiting parks, young children are closely supervised when playing near or on play equipment and older children are reminded of the dangers. Care is taken to avoid uneven surfaces that may encourage trips and falls for younger children. Children are discouraged from approaching unfamiliar dogs. In farm parks, children are shown how to safely touch, and feed animals and hand-sanitising gel is used if soap and warm running water is not available after touching animals. Visual checks



are carried out in parks and open spaces for dangers such as animal faeces and sharp objects and these are removed by me if safe to do so, or children are moved to a safe area to continue playing.

When near water, all children are closely supervised and where possible are encouraged to stay behind barriers. Children are reminded of how to remain safe if standing near the water's edge if feeding ducks and very young children are strapped in buggies. When walking near open water, care is taken to walk away from the water's edge.

When visiting other people's houses or toddler or childminding groups, visual checks are carried out to ensure that no hot drinks are left at child's height and that doors are secured or well supervised to prevent children leaving the building unsupervised. Toys and equipment that is in reach of children are checked to ensure they are clean and sound and are removed immediately if soiled or damaged. After a significant event I will seek additional support to maintain children's well-being if needed.

